

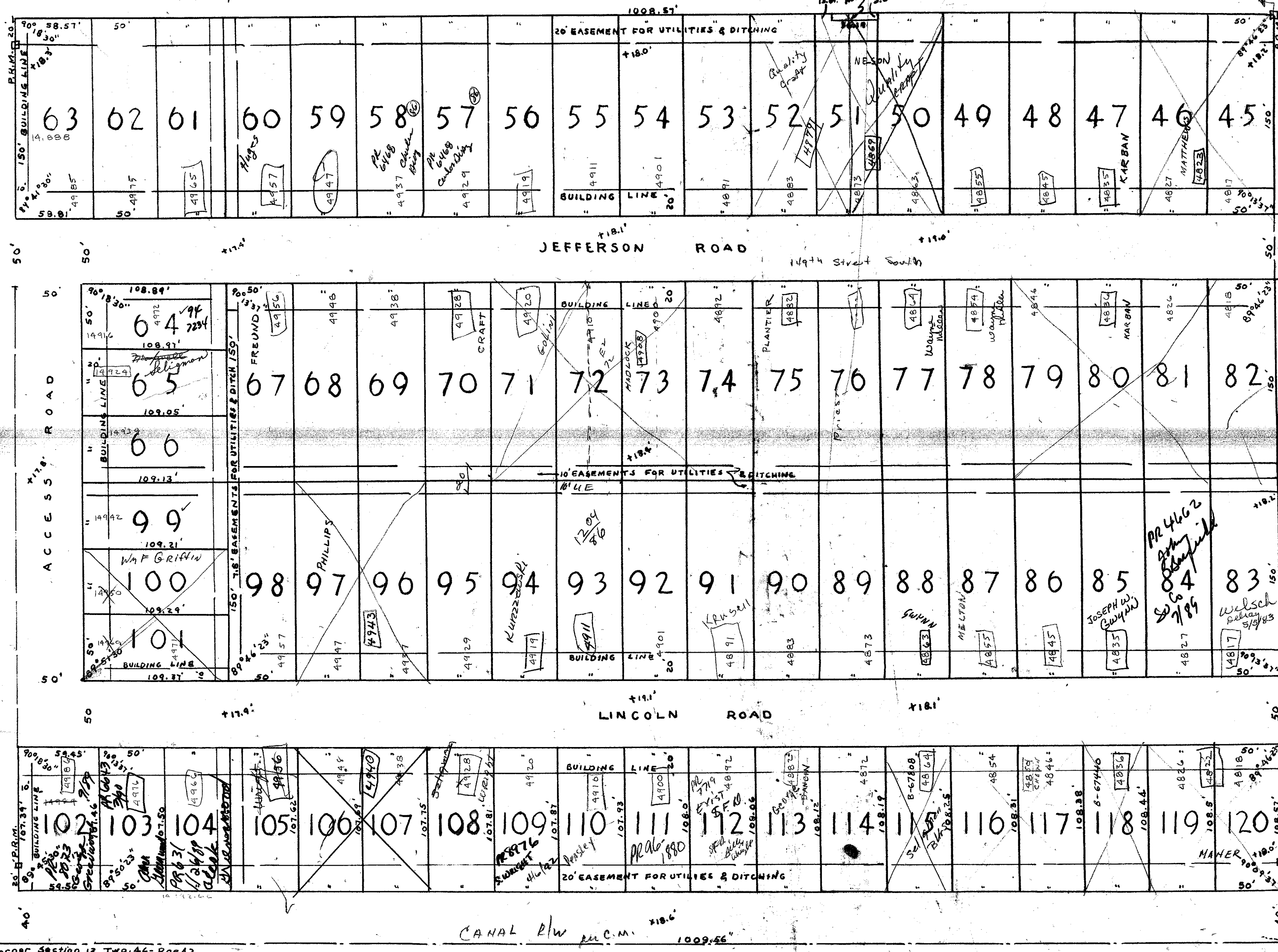
DRAWING NUMBER
24-21

SECOND ADDITION TO COUNTRY CLUB ACRES

IN S.W. 1/4 OF SEC. 13, TWP. 46 S., RGE 42 E.
PALM BEACH COUNTY, FLORIDA

STATE OF FLORIDA
COUNTY OF PALM BEACH
This Plat was filed for record at 12:45 P.M.
this 27 day of January
1953, and duly recorded in Plat Book No.
24, on page 21.
J. ALEX ARNETTE, Clerk Circuit Court
By *Magistrate H. Rose*, D. C.

76 lots
23 lots have
been used



STATE OF FLORIDA
COUNTY OF PALM BEACH
KNOW ALL MEN BY THESE PRESENTS that FRED E. KROKER, as Trustee, for the owners of the tract of land lying and being in Palm Beach County, Florida, shown hereon as SECOND ADDITION TO COUNTRY CLUB ACRES, and more particularly described as follows, to-wit:
The S.W. 1/4 of the S.W. 1/4 of the S.W. 1/4, and the W. 1/2 of the S.E. 1/4, the West 24 of the S.W. 1/4 of the S.W. 1/4 of Section 13, Twp. 46 - Rge 42, and lots 22 & 29 of the First Addition to Country Club Acres, as filed in Plat Book 24 at Page 16, Public Records of Palm Beach County, Florida.
have caused the same to be surveyed and platted as shown hereon, and do hereby dedicate to the perpetual use of the public as public highways, the Roads, as shown hereon.
IN WITNESS WHEREOF he has hereunto set his hand and seal this 27 day of January, A. D., 1953.
Witness: *J. Lewis Nass*
Fred E. Kroker (Seal)
Trustee
Witness: *August W. Wyke*

STATE OF FLORIDA
COUNTY OF PALM BEACH
I HEREBY CERTIFY that on this day personally appeared before me, an officer duly authorized to administer oaths and take acknowledgments, FRED E. KROKER, known and known to me to be the individual described in and who executed the foregoing dedication, and he acknowledged before me that he executed the same freely and voluntarily for the purposes therein expressed.
IN WITNESS my hand and official seal at West Palm Beach, County of Palm Beach and State of Florida, this 27 day of January, A. D., 1953.

Laura B. Jenkins
Notary Public
My Commission expires: Oct 22, 1955

STATE OF FLORIDA
COUNTY OF PALM BEACH
I HEREBY CERTIFY that the plat shown hereon is a true and correct representation of a survey, made under my direction, of the above described property and that said survey is accurate to the best of my knowledge and belief, and that permanent reference monuments (P.R.M.) have been placed as required by law.

August W. Wyke
Registered Land Surveyor No. 189

NOTE: Elevations are shown thus (+19.31') and refer to U.S.C. & G.S. Datum.

Approved: *Jan 19*, A. D., 1953.
Board of Supervisors of Lake Worth Drainage District
By: *M. Shomon*
General Manager

Approved: *Jan 26*, A. D., 1953
Board of County Commissioners.
By: *Lulu Hyatt*
Chairman
By: *J. M. Bond*
County Engineer

Subscribed and sworn to before me this 27 day of January, A. D., 1953.
Laura B. Jenkins
Notary Public
My Commission expires: Oct 22, 1955
1000-370
24-21
13/46/42

DRAWING NUMBER

DRAWING NUMBER

DRAWING NUMBER